



**SQUARE D**

## **Powerlink G3 Lighting Control Systems**

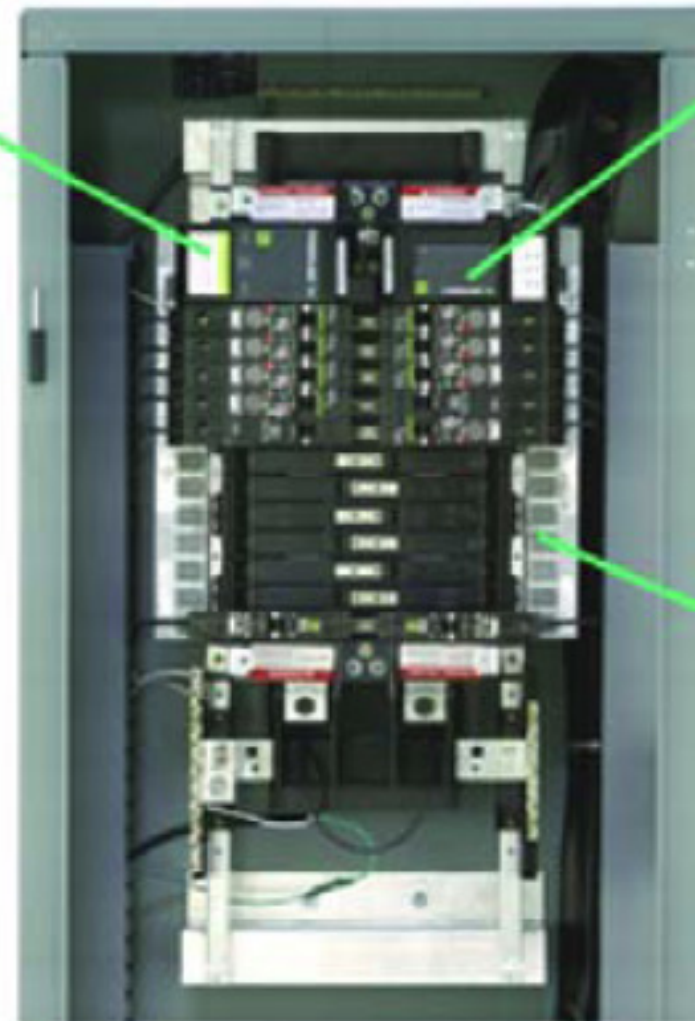
*Powerlink G3* lighting control systems provide an immediate return on your energy savings investment by automatically switching lights off during unoccupied periods. *Powerlink G3* is housed in the lighting panelboard. No extra boxes to mount, relays to wire, or complex panel schedules to decipher. Up to eight panels can be controlled from a single controller. With the click of a mouse, users can quickly observe breaker status, the operation of the system, or make configuration changes. Immediate access to your lighting control system, whether your computer is connected locally within the building, connected directly to the system controllers front panel, remotely via modem, or via an Ethernet connection.



Up to eight panels can be controlled from a single controller.



Self-contained power supply furnishes the power for remote circuit breaker switching and for the system's electronics.



Micro-processor-based controller processes many signals that originate externally from control devices, such as switches or sensors, or from its powerful internal time scheduler that switches breakers according to predefined daily schedules.

Plug-on control bus strips act as the bridge between the circuit breakers and the electronic control components of the Powerlink G3 system. No complicated, bulky control wiring or connectors to worry about.